

THE ARCHI

Published by Alpha Rho Chi Fraternity

Volume XXVIII

November, 1949

Number 1

22ND CONVENTION TO BE SCHEDULED; PLACE NOT CHOSEN

Delegates to the 21st convention of the fraternity at Ann Arbor in June, 1948, discussed tentative plans for the succeeding 22nd convention. Selection of a convention place was postponed for further consideration by the chapters and the Grand Council. The fraternity constitution provides that a convention shall be held bi-ennially and when the place is not fixed by the preceding convention, it is determined by the Grand Council.

After the Ann Arbor convention, Harry Tour of Knoxville, Tennessee, made a suggestion about future conventions. "Many APX alumni are active in The American Institute of Architects *** There are always 15 or 20 Alpha Rho Chi men at every A. I. A. convention. Why not capitalize on this situation and have our APX convention concurrent with the A. I. A. meeting the same as the NCARB, the Producer's Council, and other related groups? In this way there would be far more alumni attending the APX convention than would be possible if the two were not held together. I realize that few students or chapter representatives normally attend A. I. A. conventions. However, *** the opportunity of attending an AIA convention would be of inestimable value to architectural students. They would meet many leaders in the profession, get a taste of what is going on in principal architectural circles, get acquainted with a larger number of APX alumni, and receive the inspiration which comes from these associations."

Dwight Ely, W. G. A., commended the suggestion but
(Continued on page 3)

Lorentz Schmidt Represents Central States Architects; Is Regional Director of Institute

By Wendell Parks

Lorentz Schmidt of Wichita, Kansas, Regional Director for the Central States District of the A. I. A., was a member of the Arcus Society at University of Illinois, one of the two founding societies of Alpha Rho Chi. Later he served the fraternity on the Grand Council as W.G.E. His interest in Alpha Rho Chi and Anthemios Chapter has never faded and the Archi is happy to publish these comments on his career in architecture by one of his Anthemios brothers.



Lorentz Schmidt

Architecture has always been a highway of happiness in the life of Lorentz Schmidt. Today he reaps the rewards of a life of service to his fellow man and continues his service in even greater measure.

Alpha Rho Chi at Illinois was actually born in "Schmittty's" study room, where Arcus men often met and discussed fraternal possibilities. Today, thirty six years after his initiation into Alpha Rho Chi, we review his busy life.

Kansas born, he spent his youth on his father's farm near Clyde, and planned to make farming his vocation. Later, however, he left the farm and entered the State Normal School at Emporia.

After two years he transferred to the University of Illinois and enrolled in Architecture in the College of Engineering, graduating in 1913.

From college he went first to Chicago to gain a little experience. There he worked in the office of Holabird & Roche.

Leaving Chicago, he headed west to his native state, to begin a career of service to the people he loved, in a country filled with opportunities. He chose Wichita, the "Peerless"
(Continued on back page)

"Who Gets ARCHI?" All Members Whose Addresses Are Known

"Only a very few of our chapter members received a copy of THE ARCHI this last summer. Does THE ARCHI staff have a complete list of members and their addresses?"

James Goncher, Demetrios W. S., asked this question in his fall report to the Grand Council. The answer is that THE ARCHI mailing list includes every member of the fraternity whose address is known to the circulation office. If any APX, active or alumni, is not receiving a copy, he can get it by dropping a card with his name, chapter, and correct mailing address to
(Continued on page 3)

THE ARCHI



Published by ALPHA RHO CHI, a national social college fraternity, limiting its membership to students of architecture and the allied professions.

Address materials for publication to the editor, John J. Zimmerman, 147 East 18th St., New York 3, N.

Y. Address matters concerning circulation to the Circulation Office, Box 713, Station A, Champaign, Ill.

THE GRAND COUNCIL

DWIGHT P. ELY, W.G.A., 802 Buckeye Bldg., Columbus 1, O.

VERLE L. ANNIS, W.G.S., Box 64, U. of So. California, Los Angeles, Calif.

GEORGE A. WHITTEN, W.G.E., 1619 Walnut Avenue, Wilmette, Ill.

ARTHUR D. PICKETT, G. L., Round Hill, Va.

UNDERGRADUATE CHAPTERS

ANDRONICUS — U. of So. California, 710 W. 28th St., Los Angeles 7, Cal.

ANTHEMIOS — U. of Illinois, 1103 So. First St., Champaign, Illinois.

DEMETRIOS — Ohio State University, 101 Twelfth Ave., Columbus, Ohio.

IKTINOS — U. of Michigan, 608 East Madison, Ann Arbor, Michigan.

KALLIKRATES — U. of Virginia, Box 1702, University Station, Charlottesville, Virginia.

MNESICLES — U. of Minnesota, 609 Ontario St. S. E. Minneapolis, Minn.

Alumni Active Membership Cards, Designed By D. Ely, Go To Life Subscription Holders

The new Life Active Membership card for alumni, designed by Dwight Ely, W. G. A., is now being sent to those members who pay their alumni dues by the life subscription of \$25, at one time or in installments over three consecutive years. The card is reproduced here in black and white; the original cards are handsomely emossed, with red, blue and gold in the lettering.

Life dues have been paid in full by 8 alumni, representing 5 chapters. These are:

ANTHEMIOS — Joe W. Ganschinietz, George A. Whitten.

DEMETRIOS—Dwight P. Ely.

MNESICLES — Myron R. Dasset, Anton Johnson, Harry J. Korslund.

PAEONIOS—Chas. W. Shaver (Hon.)

THERON—Verle L. Annis.

Partial payments of life dues

have been made by:

ANDRONICUS—Robert Y. Meyer.

ANTHEMIOS — Carl R. Blum, John P. Guyer, Fred A. Rohn, Lorentz Schmidt.

DEMETRIOS—J. J. Black, V. E. Fulkner, Lot Green, Warren C. Sutter, Walter A. Taylor.

IKTINOS—Arnold B. Berg, Charles T. Miller, Migel C. Rozas, Charles G. Slater, John J. White, Jr.

MNESICLES—George L. Dahl.

PAEONIOS—O. L. Lantz.

POLYKLITOS—George D. Smith, Jr.

Annual dues are acknowledged by a blue card, with the Grand Council seal in gold, showing the member's name and chapter. Alumni who had paid their 1949 dues before June 1 were listed in the June Archi. Since then, W. G. E. Whitten reports the following additions to the roster

ANDRONICUS — M. Lee Ellis, Robson Chambers, Denver Markwith, Jr., Robert Y. Meyer, Herbert B. Pratt, John R. Ross, Lorrin L. Ward, Roy B. Winder, Jr.

ANTHEMIOS—John B. Abbott, Walter G. Bishop, Chauncey M. Buck, Albert O. Bumgardner, Ralph W. Crain, Jr., Prof. Ralph Fanning, Donald H. Honn, Howard W. Hovey, Bernard H. Ivey, Fred H. Jobusch, Donald T. Jordan, Bernard E. Kinsock, Harold C. Kniebusch, Ralph E. Kock, Wm. H. Koenig, Joseph P. Llewellyn, Joseph J. Patterson, Carl E. Paulson, Case M. Rutledge, Edward J. Slygh, Edgar A. Stubenrauch, Wm. Stuhr, Harry B. Tour, Glen Yockey.

DEMETRIOS—J. T. Beem, Wm. T. Coloredo, Carl E. Kuck, Joseph T. Thomas.

IKTINOS—Gordon A. Belson, Arnold B. Berg, George P. Everson, Arthur L. Held, Jr., George J. Lind, John D. Martindale, David H. Miller, Willard Oberdick, Laurence T. Ray, Richard G. Snyder, George Sprau, Jr., Robert J. Stoll, Oscar F. Wild, Donald Wolbrink.

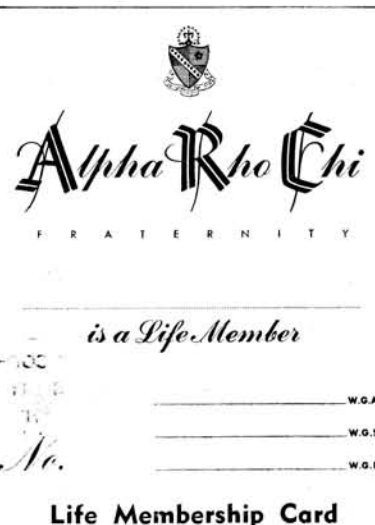
KALLIKRATES—G. L. Bangham.

MNESICLES—Floyd W. Brown, Wallace T. Bruce, Bruce E. Church, Newton E. Griffith, W. C. Hamilton, Henry O. Leonard, Leonard A. Melkus, Clarence J. Olsen, W. H. Schneider, G. B. Youatt.

PAEONIOS—Wm. H. Keonig, Leo Reid, Carl G. Ossmann, Clarence Rinard.

POLYKLITOS—Frederick C. Boldry.

THERON—Richard S. Montgomery.



L. Morgan Yost Edits Institute Chapter Bulletin

L. Morgan Yost, Demetrios '31 of Kenilworth, Illinois, is First Vice President of the Chicago Chapter, A. I. A., and Editor of the Chapter Bulletin. That Bulletin is distinctive in content and format—the September number is printed in a size similar to the A. I. A. Journal and includes 16 pages of timely and interesting news for Chicago architects. Yost is well known for his distinguished work in contemporary residential design and as consultant to several magazines.

Another A. P. X., Leo M. Bauer, Anthemios '14, of Detroit, is represented in the Bulletin with an article on Office Practice, which was presented at the 1949 convention of the Michigan Society of Architects.

The Bulletin notes that Harford Field, A. P. X. from Anthemios ('24), has closed his Hinsdale, Illinois, office and moved to Hartheoma on Glen Lake, Cedar, Michigan, where he has a comfortable rural practice.

For this Chicago news THE ARCHI thanks Kenneth Smith of that city, President of the Anthemios Alumni Association.

Dwight Ely Marries
Dwight Palmer Ely, W. G. A. of the fraternity, and Mrs. Ferne M. Elliott were married on September 6, 1949, in Columbus, Ohio. The ceremony was performed by Rev. Gordon S. Price at Trinity Church. Howard E. (Doc) Letson, Demetrios '21, was best man for Brother Ely.

Ely is an alumnus of Demetrios Chapter. He graduated from Ohio State University in 1917, and soon after went with the Ohio Farmers Insurance Company at Columbus, where he is now Production Manager.

"Pop" Ely has served Alpha Rho Chi on the Grand Council as W. G. A. since 1923. The 21st National Convention at Ann Arbor in 1948 officially recognized his leadership in a resolution expressing the gratitude of the fraternity and authorizing the award of a silver medal commemorating his 25 years in office.

The best wishes of the fraternity go to Mr. and Mrs. Ely in their home at 2955 Palmetto Street, Columbus.

Council Reports Financial Status

George A. Whitten, W.G.E., has furnished the following summary of assets and liabilities from his financial statement for the fiscal year ending June 30, 1949:

ASSETS

CASH	
Wilmette State Bank	
General Fund	\$ 2,467.
Archi Endowment Fund	2,010.
Archi Operation	1,052.
Alumni Endowment Fund	236.
G. C. Annual Dues	304.
Building Fund (Kallikrates)	230.
	\$ 6,299.
Undeposited Checks and Coupons	\$ 55.
Accounts Receivable	
G. C. Annual Dues	258.
NOTES	
Anthemios Control Corp.	5,000.
Iktinos Building Association	800.
	\$ 5,800.
INVESTMENTS	
Stocks and Bonds (Market)	\$ 6,380.
(Archi Endowment Fund)	
	\$18,792.

LIABILITIES

Building Fund (Kallikrates)	\$ 230.
Accounts Payable	
Current Archi Expense	224.
Net Worth	18,338.
	\$18,792.

NOTE: All accounts receivable and accounts payable shown on this statement have since been paid.)

Kallikrates News

Raul Wilkins, one of Virginia's delegates to the 1948 convention, surprised his brothers by getting married August 19. His bride, the former Amelia Maxine Lewis, is from Sayre, Pennsylvania.

Richard Moon sent this news to the Archi, and wrote also that three Kallikrates men graduated in June and are now employed in architecture. They are Don Beall, working in Washington, D. C.; Joe Norris, employed by the Navy at Portsmouth, Virginia; and Dick Walton, working hard down in Houston, Texas.

Russell Jordan was seriously injured on August 21 when he was pinned under his overturned car and badly burned.

Allen Cherry, William Dove and Dean Owens are Kallikrates chapter officers this fall.

New Chapter House For Iktinos

The Ann Arbor chapter is in the process of establishing its new home at 640 Oxford Road after 30 years at 608 East Madison. The Madison Street location has been taken by the University as part of a site for a men's dormitory. The new property is in the desirable Hill-Washtenaw section of Ann Arbor and includes about 2½ acres of wooded land. Necessary alterations to the house, principally to provide enlarged dining quarters, are proceeding rapidly. Plans include incorporating in the new house the familiar stone entrance doorway from 608 East Madison.

Successful consummation of the long negotiations with the University and with owners of properties available represents many days of hard work by active members and alumni of the Iktinos Building Association, including Bert Trowell, Henry Ruifrok, and O. K. Griffith, officers of the Association, Ralph Hammett of Ann Arbor, and Dave Stiffler and Robert McClure of the chapter.

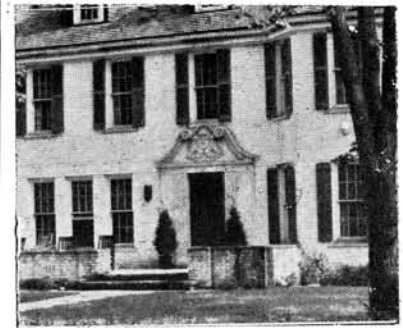
Mailing List . . .

(Continued from page one)

Box 713, Station A, Champaign, Illinois. Progress has been made in bringing the mailing list up to date, but addresses are still missing and becoming obsolete.

If you move and do not send THE ARCHI your new address, the search to find you starts all over again.

Life subscription has been paid by every member initiated since September 1, 1924. A large proportion of those initiated before that date paid life subscriptions in the campaign conducted prior to 1930. Since 1947, every initiated Alpha Rho Chi has been counted as a subscriber and should be receiving each Archi. Since 1945, issues have appeared in October, 1946; January, May, and November 1948; February and June, 1949.



"608" Doorway to Move

Convention . . .

(Continued from page one)

raised several questions for which satisfactory solutions would need to be found. "The matter of finances is, of course, very important with us and as a consequence we have been holding conventions (biennial) at an intermediate point, such as Ann Arbor, Champaign, or Columbus. *** Over and above the matter of railroad fare is the cost of lodging and board and this, of course, can be kept at a minimum when we meet in a chapter house. There is also the matter of time. We have to hold our conventions at a time when our boys can all be away from school, which usually means New Year's or the first part of June. We have found, furthermore, that when a chapter entertains a convention, the chapter generally derives great benefit. Also, the visiting delegates get a chance to see other chapters and how they are situated, and this is advantageous to them."

The convention, by the constitution, has control of all matters pertaining to the fraternity as a whole. Matters considered by the delegates to the 21st convention included finances, means of fostering alumni support, THE ARCHI, the Alpha Rho Chi medal, new chapters, revisions to the constitution and by-laws, a plan to give official status to retired W. G. A.'s, and election of Grand Council officers.

Lorentz Schmidt, Anthemios '13, Is A. I. A. Director

(Continued from page one)

Princess," as the place to stake off a claim to the designing and planning of future schools, public buildings and homes. A faded newspaper clipping recalls that event, "Chicagoan Comes West and Picks the Peerless Princess as Live One."

So it was here in 1915 that Schmitt opened his first office, but he found it an arduous task to get started. The old attitude expressed by "we like your ideas, but we want someone with experience" was a big hurdle for him, just as it is for every other ambitious new practitioner, but he did not give up.

Since opening his own office, he has handled successfully millions of dollars worth of construction. Through fair dealing with all he has justified the confidence reposed in him by his clients and earned the faith of contractors, making his influence a great factor in raising the standards of the building industry of our state.

He has always been a friend of the man on the job, and has advocated good working conditions and rates of pay. The quality of his buildings reflects the sincere cooperation of all those working with him.

Schools, churches, residences, factories, public buildings, apartments, hospitals and housing are included in his varied practice, commissions for which have come from the far corners of the state. Kansas communities have responded generously to his offer of buildings designed to interpret their way of life, and have provided a clientele that assures many future opportunities.

Today the firm, Schmidt, McVay and Peddie, operates in their own building, a very comfortable and pleasant one, planned for the business of architecture.

Schmidt, a corporate member of the Institute since his

first year of practice, was the first organizer of the Kansas Architects, and has served three times as president of the state architectural organizations. Today the Kansas Chapter is one of the strongest and most active in the Institute. Recognizing his leadership, the Kansas Chapter presented his name for Director of the Central States District of the A. I. A., and he was elected to that position in 1948. His enthusiastic interest is demonstrated by his visits to the various chapters throughout the district, where his personality has made him a friend to all.

This year Kansas enacted an Architects' License Law, largely as a result of the efforts of this "Crusader," who never gives up if he knows he is right.

The versatility of Schmitt's nature is well shown by the variety of his recreations. Ever since the days when he was working his way through school, he has always taken some time out for play. Today his skill — whether at golf, fishing, hunting or poker — puts him out ahead of the average competitor.

In Wichita he has consistently devoted his best energies to public service and the betterment of the community. His loyalty to his church is reflected by the religious tone in his daily life. He has been an arduous worker in Scouting and other youth activities. Civic clubs and the Chamber of Commerce have always enjoyed his support, backed by his time and money. He heads the powerful Building Industries Committee and has activated a statewide Builder's Forum and annual Home Show.

He has always encouraged

higher standards of accomplishment among students. The Freshman Scholarship Award is given yearly by Schmitt at each of our two state schools. Recognition of merit, in the classroom, in the office, and on the job, has always been a characteristic of his relations with his associates.

If I were to pass up this opportunity to write about Schmitt's family, I am sure he would be disappointed. His wife and children, and now grandchildren, have brought him immeasurable happiness. The close companionship of Mrs. Schmidt and her sympathetic participation in all his activities have been a constant inspiration.

It has given me great pleasure to write of Lorentz Schmidt's work, for his career and his whole philosophy of life make a story that excites enthusiasm.

* * *

Wendell Parks is an alumnus of Anthemios Chapter, '27. Before studying at Illinois, he worked in Lorentz Schmidt's office. After graduation he returned to Wichita, where he was associated at different times with three other Anthemios men, Glen Thomas, Harry Overend, and Godfrey Hartwell, all of whom had worked with him in Schmidt's office.

Since 1938 Parks has practiced in partnership with Ed Forsblom in Wichita. Work now being done by the firm includes city and parochial schools, hospital additions, a girl's dormitory for the state, and a large plant for the Wichita Coca Cola Company.

Parks has served two terms, 1945 and 1946, as president of the Kansas Chapter of A. I. A. He reports that Y. M. C. A. work is his outside interest and fishing and golf his recreation. He has three sons, one studying architecture at Kansas State, one studying psychology at Minnesota, and one in high school.

