

THE ARCHI

Alpha Rho Chi Fraternity • Architecture and the Allied Professions

Volume XXXII

NOVEMBER, 1953

Number 1

Seattle A.P.X.'s Stage Party At Convention

More than one hundred alumni and guests attended the cocktail party arranged by Seattle A. P. X's at the A. I. A. Convention last June 17th. The get-together was in the Olympic Hotel's Junior ballroom and Kenneth Koehler (Illinois '47), program chairman, writes, "At the time we held the cocktail party Mr. Ditchy had been elected and his attendance was a highlight. We had an extremely good turnout but wish we had limited the hours inasmuch as many could not stay the entire period and consequently missed some of their friends. The big A.I.A. dinner dance followed so the whole evening was a gala affair with Illinois dancing with Minnesota, etc., and we have every indication that at either the cocktail party or the dinner dance friends were able to meet. We all had a good time renewing acquaintances and discussing the magnificent building sites and splendid weather of Seattle."

Besides Koehler, Seattle alumni at the party included Jay Ingels from California; Dale Benedict, Al Bumgardner, Ken Helms and Marvin Patterson from Illinois; James Blair and Frank Stanton from Michigan.

* * *

Ralph W. Hammett (Minnesota '19) of Ann Arbor is in Europe on a year's sabbatical leave from his post at University of Michigan's College of Architecture and Design. With Mrs. Hammett he sailed from New York on September 10th for Lisbon, Portugal, where he attended the International Congress of Architects as a delegate for the A. I. A. and the Michigan Society of Architects.

The Hammetts took their car and are driving through Spain, France, Switzerland and Italy to arrive in Rome about December 15th where

(Continued on page 4)

Clair Ditchy, Former W.G.A., Heads A.I.A. As 34th President

Clair W. Ditchy of Detroit, F.A.I.A., widely known for his leadership in professional architectural activities, is thirty-fourth President of the American Institute of Architects, elected at the Seattle Convention in June. Clair is an alumnus of Iktinos and was one of the incorporators of Alpha Rho Chi in 1914.

Ditchy has practiced architecture in Detroit since 1921. In 30 years of service in many offices in professional organizations, he has been President of the Michigan Society of Architects and the Detroit Chapter A.I.A., Great Lakes A.I.A. Regional Director, and for six years Secretary of The Institute. He was elected F.A.I.A. in 1944 with the citation, "Admitted to The Institute in 1924. An outstanding architect of splendid character, high ideals and unusual executive ability; has been advanced to Fellow-

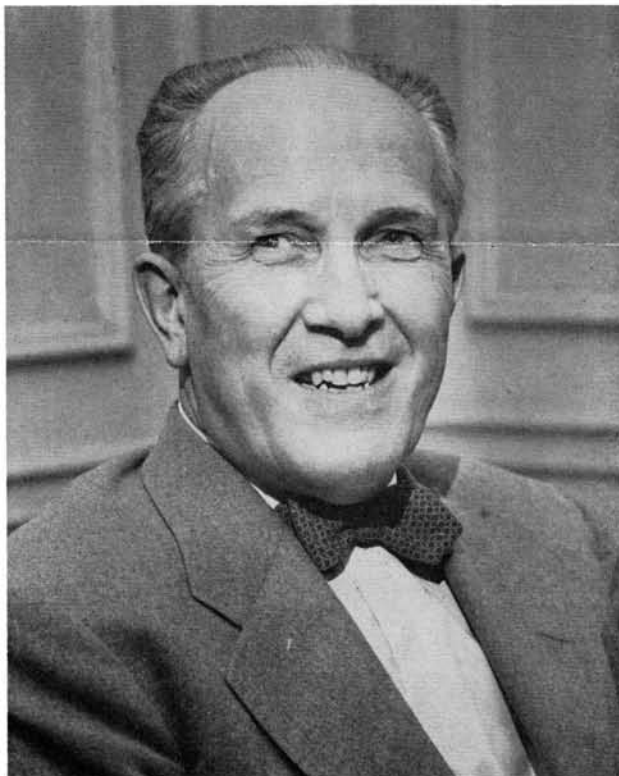
ship in The American Institute of Architects for his outstanding practice, his adherence to the ideals of The Institute, and his contribution and service in various capacities to the Michigan Society of Architects and to The Institute for the Great Lakes District."

As A.I.A. President, Ditchy has said, in a message through The Institute Journal, "Over the years, The Institute has integrated the profession and has made available to each of its members the experience and inspiration of all. It has supplied him with documents and advice which by their use have marked him with professional distinction and have advanced his ability to practice successfully. It has made of him a crusader in an army pledged to the cause of improving man's environment, and has armed him for the venture. It has developed and maintained contacts with related professions, and has promoted understanding with groups whose objectives impinge upon ours or vice versa. It has gathered strength for accomplishment wherever and whenever its resources and opportunities afforded it. All of these services relieve the practitioner of many hazards and reduce the routine portion of his work to a minimum, thus releasing his time for more valuable creative phases of his art."

Michigan Graduate

Clair was born at Kelly's Island, Ohio, in 1891. He graduated from University of Michigan, College of Literature and Fine Arts, in 1911, and from the Architectural College in 1915. He was instructor in Architecture at Michigan, then worked for Albert Kahn in Detroit. From

(Continued next page)



Clair William Ditchy, F.A.I.A.



1917 to 1919 he was a lieutenant in the A.E.F., with a year on detached service with the Fourth French Army. In 1920, he was married to Berenice Brookmyer of Detroit. The Ditchys have three daughters and—since August—a granddaughter.

A.P.X. Leader

Clair was one of the organizers of Alpha Rho Chi and a charter member of Iktinos at Michigan. In 1916 he launched *The Archi*, as editor of Volume I, and he was the Fraternity's second W.G.A., from 1917 to 1921. His talents as toastmaster and speaker have been called upon at many student and alumni gatherings and he has always responded generously. At a Founder's Day dinner he said, of some of the Fraternity's values, "What brings us together this evening? In a sense we are the guests of memory. We older men have come here to seek our comrades of yesterday and to reclaim with them the pleasant incidents of days gone by.

"In varying degree, this lure of friendly reminiscence has drawn all of us. It is more beautifully and succinctly described by Liebman in his *Peace of Mind* as 'the shared warmth of group fellowship' and may I hope that it includes what he still further characterizes as 'the subordination of our little egos to great moral and spiritual ends'. Surely in our lifetime, there has been no period when there was a greater need for a sensitive coordination of personal hopes

and ambitions with the general welfare than there is today and in our fraternity spirit, with its self-sacrifices, its sympathies, its tolerances and its cooperations with fellow men, we may find the emphasis which the world welcomes in approaching the inter-relationships of divergent ideologies and, if you please, upon which the peaceful future of the world depends.

"Fraternities have been criticized for their tendency to snobbishness and class distinction. I believe that professional fraternities are less vulnerable in this respect than general fraternities which are based almost totally upon social considerations. We, in particular, have as our rallying point a profession which touches every human activity. We minister to religion, to art, to commerce, to industry, to every form of human habitation, and wherever men have met and risen above the level of bare necessity, there architecture has thrived and sheltered their better impulses and recorded their finer accomplishments. * * *

"I trust that each of you may be or has been as bountifully rewarded in your friendships as I have been; and I am fully persuaded that the future of our fraternity lies in its ability to weld staunch friendships among those sensitive souls that are attracted to the profession of architecture, and, thru this channel, make a profound contribution to better citizenry and better architecture."



Winthrop M. Wadsworth

Wadsworth Accepts Inspector's Post

Winthrop M. Wadsworth has accepted appointment as National Inspector in addition to his duties as Grand Council Deputy. In this new job he will work on national organization problems along with the other Grand Council Deputies, Robert H. Bowen of Austin, Texas (Anthemios '31), and Jay G. Ingels of Seattle, Washington (Andronicus '35).

Wadsworth has long been one of A.P.X.'s strongest supporters in Minneapolis where he is in the real estate and insurance business. He was born in Minneapolis in 1890, attended public school there, University of Minnesota (Electrical Engineering) and University of Illinois where he graduated in Architectural Engineering in 1914. At Illinois he was a charter member of Anthemios. He was married in 1916 to Catherine McNab Andersen and has four daughters and seven grandchildren. In the last six years one of his several hobbies, travel, has taken him to almost every state in the U. S. as well as to Mexico and Canada.

Minnesota Alumni have honored Wadsworth with their Madsen Memorial Key for his long and active leadership in their activities. An appreciative officer has said, "Whenever something needs to be done 'Waddy' is always ready—has always turned out for alumni meetings and has devoted a great deal of his time to helping solve active problems—a really wonderful guy."



Clair W. Ditchy, architect.

Alice Crocker Lloyd dormitory, University of Michigan, Ann Arbor.

APX Grand Council Reviews Administration of Fraternity

This is a review of the national administration by the officers of Alpha Rho Chi in the light of observations at the Convention and discussions with student and alumni members.

Objectives

The immediate concern of the Fraternity is the continued strengthening of our national organization. This involves sound finance, sound active chapters and uniformity of major policies and operations. Alpha Rho Chi is a large and growing organization. It is becoming an old organization. It is an organization which has maintained and insists on the highest standards, ideals, and aspirations. Let us take advantage of our strengths, eliminate our weaknesses and continue to build a strong and vital association.

Expansion

Alpha Rho Chi makes a valuable contribution to the schools, the students, and the community. Its sound expansion will come through a strong national organization which wins increasing recognition as "the" architectural fraternity, widely known for the high standing and accomplishments of its student and alumni groups, for the Alpha Rho Chi Medal, and for its whole loyal membership. Several alumni associations are now active in promoting the formation of new chapters. In this connection all members should be alert to encourage transferees to take the initiative in building interest in new chapters at their new schools.

Alumni Support

Especially active alumni interest in several localities has greatly strengthened student chapters. The reunion of Alpha Rho Chi members at the A.I.A. Convention is a widely appreciated opportunity for pleasant reminiscence and good fellowship. The successes and honors achieved by our individual members reflect favorably upon the Fraternity, but we need more organized support from active alumni groups.

National Officers

The Fraternity has been fortunate, through the years, in the caliber of the men it has obtained for national officers. An officer must not only have

the necessary ability, judgment, experience and knowledge, but he must also be willing to contribute a great many hours of time which would otherwise be spent with his family or in his own business.

The W.G.A. acts as a general manager. The W.G.E. is executive secretary and treasurer for an operation of no small magnitude. The W.G.S. is responsible for distribution of the Alpha Rho Chi Medal. The Grand Lecturer's duties are to promote and install new chapters.

Grand Advisor is a new office established by the 1952 convention. The G.A., with his many years of experience in the Fraternity's national operation, acts as guide and counsellor for the Grand Council.

The National Inspector (a new officer) will work with and coordinate the activities of national deputies, who are in charge of Grand Council operations in designated areas. The Deputies' work will become increasingly important as plans are formed for assisting active chapters and developing further national expansion.

National Publications

The Archi has been increasingly successful in regularity, appearance and content. It is being produced at nominal cost. Efforts to improve it are being made continuously. With consideration to its Fraternity-wide circulation, it strives to report (1) Grand Council and Convention policies and actions, (2) chapter activities, and (3) alumni achievements and professional activities.

The suggestion is frequently made that The Archi should publish original articles on professional subjects by members. Such material is always being sought and will be used whenever it is available.

A national Directory was published in August, 1951. In two years many corrections and additions have been recorded and W.G.E. George Whitten plans to publish a new Directory in 1954 which will be the



Bob Calrow, W.G.A.

most complete list of members and addresses yet available.

A manual, "The Archi Pledge", is furnished for instruction of men preparing to join our Fraternity. For active members a new manual is being written, covering our history, traditions, ideals and objectives for the encouragement of wider and more effective participation in chapter and fraternity operation.

National Finances

All transactions for the Fraternity are governed by provisions of the Constitution and By-Laws, which establish four Funds encompassing all items of income and expenditure.

General Fund—for national operating expenses, membership certificates, convention and charter expense, and distribution of the Medal. Income includes \$5 from each initiation fee, \$4 in semester fees and \$3 convention assessment annually from each active member. Also included are ten percent royalty on fraternity jewelry, new charter fees, and special income as assigned by the Grand Council.

Building Fund—Amounts accrued for each chapter by its remittances of \$10 collected on initiation fees at time of pledging. Held in trust until requested by respective alumni associations for retirement of mortgages, building or re-furbishing local chapter buildings.

Archi Endowment—Fifteen dollars of each initiation fee is assigned as life subscription to The Archi and held in this fund. Interest only is used for Archi expenses.

(Continued on page 4)

ALUMNI DUES . . . SINCE MAY 1953

Alumni dues for support and expansion of the Fraternity's national organization were established by the 1938 Convention and affirmed by the 1948 and 1952 Conventions. Annual dues are \$2, and Life dues \$25, payable at one time or in three annual installments. Payments of Life dues are designated "Life Membership". Dues are payable to W.G.E. George Whitten, who reports the following receipts in the three months ending Sept. 1:

PAID UP LIFE MEMBERS

120 Efflo E. Eggert	Demetrios
121 Joe H. Wildermuth	Anthemios
122 H. Arthur Tucker	Iktinos
123 Edgar N. Drew	Anthemios
124 John E. Lundstrum	Anthemios
125 Milton L. Anderson	Mnesicles
126 Denver Markwith, Jr.	Andronicus
127 W. A. Warrick	Iktinos
128 Richard J. Larsen	Mnesicles
129 Wallace T. Bruce	Mnesicles
130 Raymond J. Gauger	Anthemios
131 George D. Sherotsky	Iktinos
132 Lt. (j.g.) R. A. Pigozzi	Anthemios
133 Kenneth C. Helms	Anthemios
134 Donald M. Mayne	Anthemios

PART LIFE PAYMENTS

ANDRONICUS	
Gerald H. Bense	Stanley L. Melone
Randall Duell	Lester S. Tanner
William D. Holdredge	
ANTHEMIOS	
Dale Benedict	Norman H. Meyer
Carl R. Blum	R. J. Pfeiffer
Albert O. Bumgardner	John Pickett
Harry J. Harmon	Herbert R. Savage
Karl J. Lohrmann	Savo M. Stoshitch
Richard F. Middendorf	
DEMETRIOS	
Arthur S. Brewer	Keener G. Smith
Lot Green	Walter A. Taylor
John R. Hagely	Robert C. Yoakum
IKTINOS	
Russell D. Alexander	Willard C. Nelson
Arnold B. Berg	David H. Reider
Charles V. Cowan	David L. Stiffler
Fuad S. Hassan	John J. White, Jr.
Prof. Emil Lorch	Richard C. Zimmer
William Muschenheim	
KALLIKRATES	
Eric Donald H. Beall	
MNESICLES	
Robert F. Calrow	Clarence J. Olsen
Donald Campbell	Robert Wilmsen
PAEONIOS	
Volney A. Chase	
POLYKLITOS	
George Dick Smith, Jr.	

THERON

Hugh W. Brown, Jr.

ANNUAL DUES

have been paid by the following members from June 1, 1953 to Sept. 1, 1953:

ANDRONICUS:	
Frank Baden	Boyd Georgi
Donald L. Bartels	R. G. Johnson
Jack Taylor Collis	Henry N. Silvestri
Robert N. Eddy	
ANTHEMIOS:	
Richard K. Albyn	Frank M. Lescher
Ned E. Fischer	George L. Lindeberg
Wm. E. Hallauer	Raleigh J. Spinks
Jerome J. Klingele	Glen H. Thomas
DEMETRIOS:	
Herbert Baumer	R. E. Prince
Carl E. Bentz	Harry F. Reichard
Arthur S. Brewer	Benjamin F. Renick
Arthur S. Brewer	Leo S. Rovtar
William H. Brown	Wm. E. Schellentrage
Paul P. Brown	Eugene C. Schramm
Geo. D. Cromley	Louis C. Studer
James A. Kaltenbrun	Clarence J. Trapp
Clyde D. Kelchner	Edmund V. Ulrich
James Kratky, Jr.	Alvin C. Voorhis
Wallace B. Leffel	Marcus D. Walters
Howard E. Letson	John C. Wells
Carl E. Meinhardt	Dixon Wilson
Richard H. Mitchell	E. H. Worley
John Noel Piersche, Jr.	Frederick E. Wright
Donald I. Porter	
IKTINOS:	
Frederick Baessler	Prof. Emil Lorch
Gordon A. Belson	Douglas P. MacIntosh
Fred Horner	Thomas B. Murphey
James Wm. Kideney	Donald Wolbrink
Charles W. Lane	W. E. Zimmie
MNESICLES:	
Ogden F. Beeman	William A. Johnson
Earl Wilford Brink	Thomas Volk
Robert T. Jackels	Russell E. Williams
PAEONIOS:	
J. Dean Stout	Prof. Paul Weigel
POLYKLITOS:	
Herold Bradley	S. R. Patterson

INITIATES



The Grand Council records new initiates in the official membership roll in order of receipt of complete initiation reports. Initiates for three months ending

Sept. 1, with serial numbers in official record are the following:

INITIATES

IKTINOS, Feb. 21, 1953:	
2082 Carl Leroy Bradley	Ft. Wayne, Ind.
2083 Roy Howard Hammons	Birmingham, Mich.
2084 Kenneth Hiroshi Kaji	Holland, Mich.
2085 Gordon James Ryan	Cleveland, O.
2086 Welling Miller Squier	Clarkston, Mich.
MNESICLES, April 26, 1953:	
2087 John Walter Korngiebel	Hutchinson, Minn.
2088 James Edward Knothe	Minneapolis, Minn.
2089 Gordon D. Wagner	St. Paul, Minn.
ANTHEMIOS, Sept. 19, 1953:	
2090 Charles Robert Haugh	Gary, Ind.
2091 Edward Jaskowiak	Chicago, Ill.
2092 Robert Ira Proctor	Libertyville, Ill.
2093 Arthur Bernard Py	Wauwatosa, Wis.
2094 Thomas Southmayd Torke	Wauwatosa, Wis.
2095 Thomas James Wrona	Chicago, Ill.
ANTHEMIOS, Feb. 14, 1943:	
2096 Mario Marchisio	Monroe, Mich.

Council Reviews...

(Continued from page 3)

Alumni Fund—for national development and expansion. Fund includes Life Membership payments (\$25) held as endowment. Interest and annual dues (\$2) are available for expenses related to special purpose of fund.

The W.G.E.'s biennial report to the Convention includes itemized financial statements and a recommended budget for Grand Council operations for the ensuing two years. For the 1952 Convention a special analysis of national finances was made by an Alumni Finance Committee. The financial statements and the committee's report, which commended the national officers' management of finances, are included in full in the Official Report of the Convention.

Hammetts in Rome...

(Continued from page 1)

they will spend the remaining months of the academic year. Professor Hammett will be at the American Academy as visiting resident in architecture. He was a student at the Academy from 1924 to 1926 when he held the Robinson Travelling Fellowship from Harvard where he received his Master's Degree in architecture.

Harlow C. Richardson

Harlow C. Richardson (Mnesicles, Faculty '29) died in General Hospital, Minneapolis, from injuries received in an automobile accident on September 10th. He had been living at the Campus Club and with friends in Anoka. After retirement from the University of Minnesota Faculty in 1945 Professor Richardson had travelled extensively and had taught for a time in Hawaii. The many Mnesicles alumni who knew him intimately were shocked and grieved by the untimely death of a wonderful friend, teacher and brother.



THE ARCHI, published by Alpha Rho Chi Fraternity. EDITOR, John Joseph Zimmerman, 147 East 18 St., New York 3. Circulation office, Box 713 Station A, Champaign, Illinois. ALPHA RHO CHI is a national social college fraternity limiting its membership to students of architecture and the allied professions GRAND COUNCIL, Robert F. Calrow, W.G.A., 4828 Garfield Ave. S., Minneapolis, Minn.; George A. Whitten, W.G.E., 1619 Walnut Ave., Wilmette, Ill.; James T. Lendrum, W.G.S., 21 Greencroft Rd., Champaign, Ill.; Dale Benedict, G.L., 1422 37th Ave., Seattle, Wash.; Dwight P. Ely, G.A., 40 South Third St., Columbus 15, Ohio; Winthrop M. Wadsworth, N.I., 2525 Dupont Ave. S., Minneapolis, Minn.; Grand Council Deputies—Robert H. Bowen, 4100 Ridgelea, Austin 3, Texas; Jay G. Ingels, 7220 Seward Park Ave., Seattle 8, Wash.; Winthrop M. Wadsworth.

ACTIVE CHAPTERS: ANDRONICUS—U. of So. California, 710 W. 28th St., Los Angeles 7, Cal.; ANTHEMIOS—U. of Illinois, 1108 So. 1st St., Champaign, Ill.; DEMETRIOS—Ohio State University, 101 E. 12th Ave., Columbus, Ohio; IKTINOS—U. of Michigan, 640 Oxford Rd., Ann Arbor, Mich.; KALLIKRATES—U. of Virginia, A.P.X. Box, Fayerweather Hall, Charlottesville, Va.; MNESICLES—U. of Minnesota, 605 Ontario St. S.E., Minneapolis, Minn.