

THE ARCHI

Alpha Rho Chi Fraternity • Architecture and the Allied Professions

Volume XXXIII

FALL, 1954

No. 1

Grand Council Names Three New Deputies

Robert Calrow, W.G.A., has enlisted the aid for the Grand Council of three additional Deputies, who will serve with the five previously announced. The new Deputies are Frank H. Baden for California, M. Robert Des Marais for Pennsylvania, and Donald M. Mayne for Texas. Each Deputy assists the Grand Council in maintaining closer contact with chapters and alumni in his territory. Calrow feels that the Deputies can do much to strengthen the national organization and stimulate the Fraternity's development.



Frank Baden of Rolling Hills, California, graduated in architecture at U.S.C. in 1927. Frank writes, "Worked in the office of Webber, Staunton and Spaulding during college and until that wicked crash of 1929 and then designed and manufactured custom furniture for twelve years in my own cabinet factories.

"Mrs. Baden and I enjoyed a jaunt to Europe in 1933 to study architecture, furniture and interior design.

"Taught in School of Architecture while at U.S.C. and at Chouinards Art Institute 1939 thru 1942.

During several war years, while with the Engineering Illustration Group at Northrop Aircraft, much of the life of Andronicus of Alpha Rho Chi was carried on at my home. These contacts produced a wonderful collection of letters from, and history of, A.P.X. men in service around the world.

"Moving picture set designing resulted from earlier opportunities to make a great deal of furniture for moving pictures and the stars of that industry.

"Practicing architecture, designing and constructing buildings of my own, have been the projects of the last ten years. I am a member of the Southern California Chapter of the

(Continued on next page)

A.P.X. Holds 24th Convention Dec. 27th—29th at Ohio State

Demetrios Chapter at Ohio State University in Columbus will be host to the 24th National Convention of Alpha Rho Chi, December 27, 28, and 29.

Louis C. Studer, Demetrios Alumni Association President, and Dwight P. Ely, Grand Council Advisor, report that plans are firmed and the program promises to be one to remember.

Arrangements for housing and entertaining delegates and officers have been completed by Ned Eller and other members of the Active Chapter. A Grand Council bulletin has been mailed to all chapters and Grand Council officers, appointees and deputies, outlining the program and instructions to delegates.

Active delegates elected or appointed by each chapter will include two: A junior or senior who will be an active member at least through June of 1955, and a sophomore or junior who will be an active member

two years from now when the 1956 Convention is held. One alumni delegate may also be elected or appointed with the power of one vote at the Convention.

Actives and alumni other than the delegates are cordially invited to attend the Convention meetings and take part in the discussion. Only the elected or appointed delegates, however, may vote. Each Active Chapter is entitled to one vote, plus the one vote of its alumni delegate.

The Convention will be opened formally at 11 A.M., Monday the 27th. Business sessions will be held Monday afternoon, Tuesday morning and afternoon, and Wednesday morning, with final business and adjournment Wednesday afternoon. Initiation ritual will be performed Tuesday night in Demetrios' newly remodeled Chapter Room. The Convention banquet will be held Wednesday night, December 29, at the Fort Hayes Hotel.

(Continued on next page)



Demetrios Chapter at Ohio State University, Columbus.



Donald M. Mayne

New Deputies . . .

(Continued from page 1)

A.I.A. and the Architects Association of Long Beach.

"Jane and I have a son at Pomona College and a married daughter presenting us with two grandchildren."

Bob Des Marais is Assistant Professor in the College of Engineering and Architecture at Pennsylvania State University. He assisted the students at Penn State who last year organized the Vitruvius Architectural Society, prospective new chapter of A.P.X. Bob is an Anthemiois alumnus, U. of I. graduate 1948, and practices architecture in addition to his teaching at Penn State.

Donald Mayne of Dallas, Texas, is from Illinois, where he graduated in Architectural Engineering at U. of I. in 1933. He was W. A. at Anthemiois and Alumni Association Treasurer, 1934 to 1938. He had 4½ years of military service, World War II, on commission starting with R.O.T.C. Since 1934 he has been associated with the air conditioning business and is now Southwest Regional Manager for Servel, Inc., covering territory to Louisiana, South Dakota, and Arizona. He was married in 1933 to Louise Andrews, also U. of I., and the Maynes have one daughter, age 14. Don is a member of Blue Lodge, Scottish Rite, and Shrine.

Grand Council Issues Up-to-Date Directory

The Grand Council has issued a new directory of all A.P.X. members for the use of chapters, alumni, and national officers. Dated October, 1954, with 113 pages, the directory includes listings by chapter and by geographic location, and shows for each member address, chapter and year of graduation. National officers, active and alumni chapters are listed.

Extensive additions and changes, reported since the 1951 issue, are included. The compilation represents much work on the part of George Whitten, W.G.E., and will be invaluable to all national and local officers. All alumni will be interested in the listings of their own chapters and states.

The Grand Council hopes to defray the cost of printing the directory by sale of at least 750 copies. The price is \$1.00 to Alumni Dues Payers (Annual or Life Members) and \$3.00 to others. Supply of the 1951 issue was exhausted soon after printing and it is believed the new directory will be useful to many members.



Demetrios Chapter House at Columbus where 24th National Convention will be held December 27, 28, and 29.

Convention . . .

Columbus Alumni have planned for many convention visitors and have sent out reminders reading, "When planning your holiday schedule, remember that the Demetrios Chapter will be host to the 24th National Convention of Alpha Rho Chi Fraternity, December 27-29, 1954, at the Chapter House, 101 East 12th Avenue, Columbus. Alumni may attend any session as visitors. Highlights of the convention are a stag party Monday evening, the Initiation of a prominent Ohio Architect Tuesday evening, and a Banquet at the Fort Hayes Wednesday evening.



The third annual Fall Roundup on September 24 opened the season for A.P.X. at Minnesota. About 85 alumni, active members, and their guests square danced in the barn and sang around the camp fire at Glynne Shifflet's home near Minneapolis. The "Mnesicles Breeze" reports that an apt square dance caller, with Mrs. Shifflet as assistant, had the barn really swinging in no time at all. Thanks for a wonderful party went to the Shifflets especially, and to the committee, including Calrow, Dower, Wadsworth, Shimer, Monicken, Peabody, Voight, and their wives.

Ralph Rapson Heads School of Architecture at Minnesota

An article about Professor Rapson appeared in *THE MINNESOTA TECHNOLOG* of October, 1954. The authors were Carl Nelson and Norman Day, Mnesicles A.P.X. *THE ARCHI* is indebted to *THE TECHNOLOG* and to the authors for permission to reprint the following part of the article.

In May of 1954 the Design Committee of the School of Architecture chose a new head. He is Ralph Rapson, professor of architecture, from the Massachusetts Institute of Technology at Cambridge. His selection filled the position which was vacated by the retirement of Professor Roy Childs Jones in June, 1953. In the interim period the school was directed by a committee of staff members headed by Mr. Winston Close, advisory architect of the University.

Professor Rapson received his B.S. in Architecture from the University of Michigan, and then he spent two years at the Cranbrook Academy of Art, studying regional and civic planning under Eliel Saarinen. He spent four years as the head of the department of architecture at the Institute of Design in Chicago, while Moholy-Nagy was director. While at Chicago he associated with Moholy-Nagy on several designs. He also maintained a private architecture practice, in association with John Vander Meulen, while head of the department.

Since 1946 Professor Rapson has been teaching at M.I.T., maintaining a private practice in Boston (as he intends to do here) and running a store for contemporary furniture, fabrics, lighting, etc. From 1951 to 1953 he was in Europe executing several designs for the United States Government. These include embassy

office buildings at Stockholm, Copenhagen, and Athens, a new consulate at Le Havre, and embassy staff housing project at Paris.

In the words of a member of the design committee, Professor Harlan McClure, "Ralph Rapson enjoys a distinguished record as a practicing architect known for the quality of his work rather than the quantity. He has a progressive attitude and very high standards. These, coupled with his personal characteristics of tact, modesty, and real ability, combine to make him an outstanding and sympathetic educator."

The decision to move to the University of Minnesota was not an easy one for Mr. Rapson to make, but he felt that there were fresh possibilities here at Minnesota. The school has both a fine reputation and a young and competent staff. He knew that the school was small, due to its system of selective admissions, a method installed because of limited budget and meant to admit only the better men.

Professor Rapson hopes to expand the school moderately in size. The eventual development of a regional and urban planning school is also a possibility. The architectural history and technological and experimental work should probably be expanded in keeping with the modern era.

Professor Rapson's views on meth-



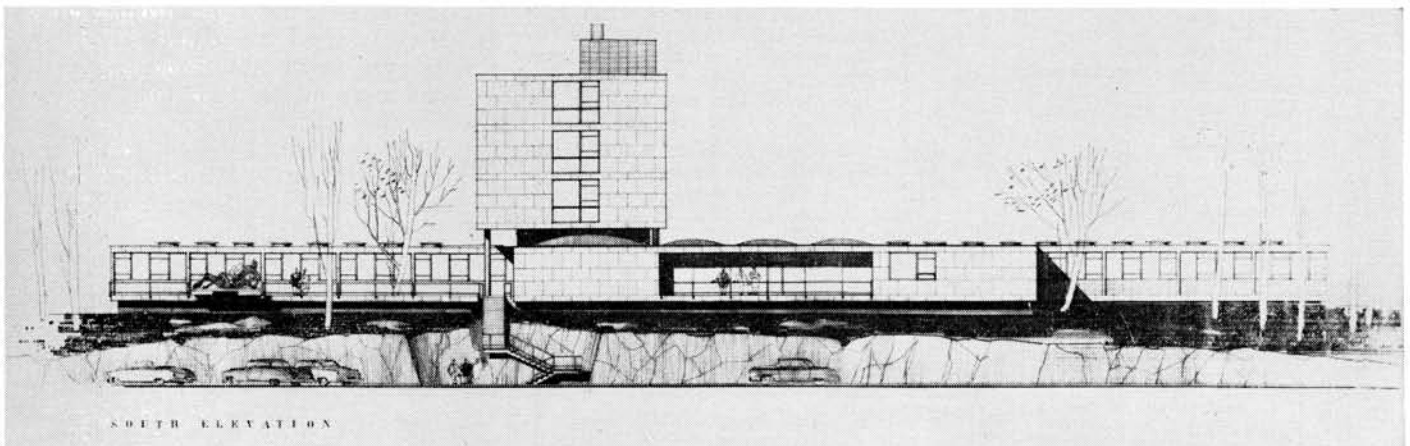
Ralph Rapson

—Photograph by
Minneapolis Sunday Tribune

ods of educating future architects are much in line with present school policies. Although the system of selective admissions as practiced by the school of architecture is not in keeping with general University principles, he believes that it is better for the school to maintain a closeness between student and faculty which tends to become lost in too large an institution. He believes that the "intimacy" that the Minnesota school enjoys relates to the outstanding success of its graduates in advanced schools and in the profession. (Minnesota graduates have an extremely high degree of success in the field.)

Professor Rapson believes that the purpose of architectural education is two-fold. It must encompass the broad philosophical approach and the practical, technological aspects as well. Many times practicing archi-

(Continued on next page)



SOUTH ELEVATION

The United States Embassy Office Building at Stockholm, Sweden. South Elevation. —Courtesy of "Minnesota Technolog"

ALUMNI DUES . . . SINCE MAY, 1954

Alumni dues for support and expansion of the Fraternity's national organization were established by the 1938 Convention and affirmed by the 1948 and 1952 Conventions. Annual dues are \$2, and Life dues \$25, payable at one time or in three annual installments. Payments of Life dues are designated "Life Membership".

Dues are payable to W.G.E. George Whitten, who reports the following receipts in the five and a half months ending November 15.

PAID UP LIFE MEMBERS

167 John D. Martindale	Iktinos
168 William D. Holdredge	Andronicus
169 George Lowell Baughan	Kallikrates
170 James E. Tomblinson	Iktinos
171 David L. Regensburg	Andronicus
172 William Muschenheim	Iktinos
173 Julian R. Cowin	Iktinos
174 Robert Wilmsen	Mnesicles
175 Savo M. Stoshitch	Anthemios
176 George M. McConkey	Iktinos
177 James W. Viger	Anthemios

PART LIFE PAYMENTS

ANDRONICUS	
Randall Duell	Richard H. Pleger
Stanley L. Melone	Lester S. Tanner
Kenneth E. Norwood	
ANTHEMIOS	
Dale Benedict	August Ignelzi
Carl R. Blum	Norman H. Meyer
A. O. Budina	Gerald A. Perkins
Albert O. Bumgardner	Earl Dean Porter
M. Robert DesMarais	Herbert R. Savage
Harry J. Harmon	Robert P. Torkelson
DEMETRIOS:	
Lot Green	Walter A. Taylor
James A. Kaltenbrun	Frederick E. Wright
Keener G. Smith	Robert C. Yoakum
Louis C. Studer	
IKTINOS	
Russell D. Alexander	Willard C. Nelson
Arnold B. Berg	Dale R. Paape
Charles V. Cowan	Stanley C. Podd
Fuad S. Hassan	David H. Reider
Prof. Emil Lorch	Robert B. Rockwood
Herbert W. Johe	David L. Stiffler
Robert D. McClure	John J. White, Jr.
Thomas B. Murphey	James G. Wilson
Alfred R. Naser	Welling M. Squier
KALLIKRATES:	
Eric Donald H. Beall	Richard A. Moon
MNESICLES:	
Donald Campbell	Elving L. Johnson
Newton E. Griffith	David E. Nordale
PAEONIOS	
Volney A. Chase	Germano Milono
Emmett E. Kraybill	
POLYKLITOS	
George Dick Smith, Jr.	
Theron	
Hugh W. Brown, Jr.	

ANNUAL DUES

have been paid by the following members from June 1, 1954 to November 15, 1954:

ANDRONICUS	
William G. Laffin	George Robinson
Alfred J. Luthi	Robert A. Schennum
Lowell W. Pidgeon	Theodore C. Stuart
James W. Rice	Roy B. Winder, Jr.
ANTHEMIOS:	
Richard A. Binfield	Edwin E. Newcomb
Walter G. Bishop	Harold L. Parr
Donald L. Brooks-Miller	Jos. J. Patterson
Charles T. Cedarholm	Karl Frank Prunitsch
Ralph W. Crain, Jr.	Willis E. Snow
Lt. Robert C. Einsweiler	Robert A. Soellner
Norman F. Grewe	Andrew S. Phillips
Powell S. Hall	John R. Tanner
Robert F. Hastings	W. Harold Tanner
Wm. T. Henderson	Harry Bird Tour
Robert A. Jorgensen	Winthrop M. Wadsworth
Jerome J. Klingele	Jack H. Wood
Arthur P. Mueller	
DEMETRIOS:	
Ervin L. Bruno	Wm. E. Schellentrager
D. James Crafs	Nicholas A. Tekushan
John D. East	Joseph E. Thomas, Jr.
William E. Loretta	Geo. W. Wegner
E. E. Perkins	John C. Wells
DINOCRATES:	
Robert Leon White	
IKTINOS:	
Frederick Baessler	Walter E. Lentz
Glenn H. Benjamin	Leslie E. Lovejoy
Arnold B. Berg	Stanley D. Peacock
Gerrit J. deGelleke, Jr.	Austin B. Race
D. Burr DuBois	George L. Richardson
William W. Flinn	Linn Smith
Donald R. Humphrey	Orrin F. Stone
Charles W. Lane	R. W. Ware
KALLIKRATES:	
Frank A. DeVore, Jr.	W. C. Ormond
MNESICLES:	
Edward H. Adams	Austin H. Lange
Kenneth A. W. Backstrom	Paul L. Roseland
Floyd W. Brown	Horace W. Tousley
PAEONIOS:	
Fred G. Billings	

Ralph Rapson . . .

(Continued from page 3)

tests say that new graduates are of limited value to a firm for the first few years because they have been trained too much in theory. However, Ralph Rapson believes that "We are here to train future architects, not just competent draftsmen. Here at the school we must introduce the student to methods of approach and solution of difficult problems in design. Unless the student grasps the total picture of site, environment, function, structure, and aesthetics at this time, he will never become more than a skilled technician."

Professor Rapson feels that, in the past, architects have been trained too much in "sticks and stones" and not enough in the problems of production and fabrication of a machine age. He feels that the values gained from actual field experience are good, though limited. He strongly supports the policy of students working in the offices of local architects as a valuable supplement to their classroom work. Also, that structural experimentation such as the recent Fuller domes project, are invaluable to tomorrow's architects.

What are Mr. Rapson's philosophies on the total picture of architecture? When asked that question, he paused and began, "It must be spiritual. By that I mean, that to be meaningful and remembered, architecture must have an intangible spiritual significance above and beyond the solution of the structural and functional aspects of the design. Good architecture must solve all the fundamental social, economic, environmental, functional, and structural problems, and evolve from a creatively inspired person to be beautiful. The profession today is coming more and more to the realization that the architect must solve our total environment, and that all phases, to borrow a phrase from Walter Gropius, must be geared to the 'human element.'"

NEW DIRECTORY OCTOBER 1954

Lists all members of A.P.X. with present addresses. Arranged by chapters and by cities and states. Available to Alumni Dues Payers (annual or life members) at \$1 per copy. \$3 per copy to others.

Proceeds to defray cost of printing. Order from George A. Whitten, 1619 Walnut Ave., Wilmette, Ill.



THE ARCHI, published by Alpha Rho Chi Fraternity. EDITOR, John Joseph Zimmerman, 147 East 18 St., New York 3. Circulation office, Box 713 Station A, Champaign, Illinois. ALPHA RHO CHI is a national professional college fraternity limiting its membership to students of architecture and the allied professions. GRAND COUNCIL, Robert F. Calrow, W.G.A., 4828 Garfield Ave. S., Minneapolis, Minn.; George A. Whitten, W.G.E., 1619 Walnut Ave., Wilmette, Ill.; James T. Lendrum, W.G.S., 21 Greencroft Rd., Champaign, Ill.; Dale Benedict, G.L., 1629 Broadway North, Seattle 2, Wash.; Dwight P. Ely, G.A., 40 South Third St., Columbus 15, Ohio; Winthrop M. Wadsworth, N.L., 2525 Dupont Ave. S., Minneapolis, Minn. Grand Council Deputies—Frank H. Baden, 27 Portuguese Bend Rd., Palos Verdes, California; Marion A. Carter, 1808 Kent St., Columbus 5, Ohio; M. Robert Des Marais, 525 Sparks St., State College, Pa.; George F. Fritzinger, 9705 W. Main St., Belleville, Ill.; J. Girard Ingels, 5633 Willow St., Seattle 8, Wash.; Donald M. Mayne, 4321 Shenandoah, Dallas 5, Texas; Winthrop M. Wadsworth, 2525 Dupont Ave. S., Minneapolis 5, Minn.; Raoul W. Wilkins, 1105 Hollins Rd., Richmond 26, Va.

ACTIVE CHAPTERS: ANDRONICUS—U. of So. California, 710 W. 28th St., Los Angeles 7, Cal.; ANTHEMIOS—U. of Illinois, 1108 So. 1st St., Champaign, Ill.; DEMETRIOS—Ohio State University, 101 E. 12th Ave., Columbus, Ohio; IKTINOS—U. of Michigan, 640 Oxford Rd., Ann Arbor, Mich.; KALLIKRATES—U. of Virginia, A.P.X. Box, Fayerweather Hall, Charlottesville, Va.; MNESICLES—U. of Minnesota, 605 Ontario St. S.E., Minneapolis, Minn.