



The Alpha Rho Chi Letter

Magazine of Alpha Rho Chi

Volume 8, Spring 1990

THE PRETTY BIG ONE:

A Brother's View of the San Francisco Shaker of October 1989

IN THIS ISSUE:

New Grand
Advisor Appointed

WGAA's Report

Grand Council
Establishes the
Alpha Rho Chi
Foundation

Elections at the
43rd Convention

Bowl Game
Roundup

Some days make you realize just how fragile life and its modern conveniences are. Tuesday, October 17, 1989 was one of those days for me. You see, I live in San Francisco, in the Marina district, to be exact, and work just 20 miles south of the city. For me, that particular Tuesday brought to light the difference between one's possessions and one's fellow human beings.

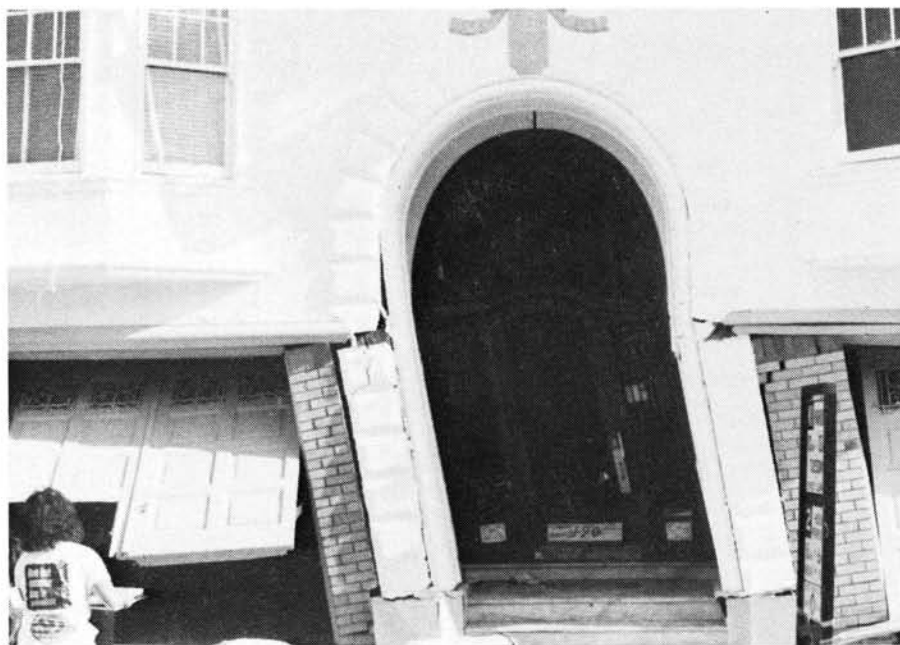
It all began about 5:00 p.m. There I sat in my office at HED Architects, having a good time with a new piece of "stuff," a Sun Micro-systems Sparcstation. I was cruising with some great 3-D graphics, when suddenly I was cruising along the floor, literally. Things were rocking, the ceiling tiles were falling and my co-workers were dashing under ta-

bles. The quake lasted only ten seconds, but seemed like a lifetime in slow-motion.

When the building stopped moving, we all started to, quickly falling out the door and soon returned to our calm, cool and collected architect norm. The Scotch bottles appeared and people acted cool. I had a volleyball match that night and figured I should leave. Someone told me I was crazy.

Actually, during my 3+ years in California, I had been through a number of "shakers." Things shake, you shake, a few cans fall off the shelves and life goes on. This time was different. The power was out and fortunately those with battery-operated radios fished them out

(continued on Page 4)





WGAA's Report for the Alpha Rho Chi Letter

New Grand Advisor Appointed

Dear Brothers:

I am pleased to announce the appointment of William D. Bradford, Anthemios, as Grand Advisor. Bill has always served Alpha Rho Chi diligently with great concern for its future. During his term as Worthy Grand Estimator, he established sound, responsible budgetary procedures which remain in effect today. His enthusiasm and counsel will be welcomed by all the members of the Grand Council and the membership as a whole.

I also want to express our sincere appreciation to Brother Filip for his dedicated service to the fraternity. Last summer, when John indicated his desire to withdraw as Grand Advisor so that the Grand Council could seek a new member with a fresh approach, everyone realized his actions were motivated by what he felt was best for Alpha Rho Chi. John has always acted unselfishly on behalf of the fraternity as demonstrated by his voluntary contribution to subsidize the 5% rebate program for monthly Membership Reports.

The Grand Council has always stressed the need for regular reporting not only as a means for collecting dues and tracking membership, but also for providing timely membership services to you. Hopefully, the rebate will encourage all chapters to respond positively and motivate everyone to participate. So far only about half of the chapters have returned reports on time; make sure your chapter does not miss this opportunity to get money back from National.

Charles L. Nickel, WGA

It has been a busy half-year since I took over the office of WGAA. I have much to report to our fraternity and much to ask of all of our brothers in the coming months.

I must publicly acknowledge and congratulate Wayne Burford for the outstanding job he did in creating, defining and executing the duties of this office, as APX's first WGAA. We owe our modern record-keeping system and ever-strengthening alumni support to Brother Burford's monumental effort over the last six years.

Thank you, also, to all those who have helped us locate lost brothers in the past year. Among the "found" brothers were members of the late 1920's class of the Paeonios Chapter (Kansas State), located by Brother Eugene T. Van Vranken. His help put me in touch with Brother Walter Whiteside and Brother Ferol "Doc" Gehring, who has some great stories about the convention of 1929-1930! Doc has sent me a copy of his family's history, excerpts of which I will share with the fraternity in the future.

This fall, along with the annual alumni dues invoice, we decided to offer APX logo shirts, glassware, posters and other merchandise. I would like to see the Alpha Rho Chi name more visible in the academic and professional worlds, and this is just one small step in that direction. Orders are still coming in, but I proclaim this venture the first success of many similar, future endeavors. If you have any ideas for future publicity or fundraising projects, I would like to hear from you.

The striking new design on the shirts was created by Elizabeth Clark Lerch, a fellow Metagenes alumna. An important note

about that: Elizabeth's professional artwork was a volunteer effort. Her work, and that of the other APXers who helped sort, staple and distribute the invoice/order form, is the kind of support Alpha Rho Chi needs from its brotherhood if we are to grow and succeed in the future. No kinder, gentler stuff for us, thank you; we need to dig in and get to work on our second 75 years!

In the coming months I will be updating the membership records and improving our computer system. Our membership database is still painfully void of basic information about our members. Our mailing list has incomplete and incorrect addresses, missing phone numbers, and very little professional information. Some active brothers, including chapter officers and recent alumni, are not even on file because their chapters never completed the proper paperwork.

Please contact me and/or your chapter to make sure that your membership data is current. If this newsletter was forwarded to you by the post office, or if you did not receive one at home or at school, that means that I no longer have your current address. Even if you can not pay alumni dues at this time, please complete and return your alumni data envelope back. Thanks for your help.

I believe that Alpha Rho Chi is looking at a very exciting time in the next few years, with prospects for new chapters and increased professional and academic visibility. I'm happy to be serving our fraternity, and I'm counting on support and initiative from all of you to help us reach our goals.

Phil Buckberg, WGAA

Alpha Rho Chi Letter



Grand Council Establishes the Alpha Rho Chi Foundation

In his farewell address to the Fraternity, outgoing WGA John Ross officially announced the establishment of the Alpha Rho Chi Foundation. The Foundation is the culmination of two year' effort by the Grand Council to create a vehicle to ensure the long-term stability of Alpha Rho Chi and to expand its presence in architectural education.

The goals of the Alpha Rho Chi Foundation include:

- To fund student scholarships and other recognition programs
- To fund professional programs and lecture series
- To advance education and research directed toward the discovery, promotion, furtherance, and dissemination of knowledge related to architecture and the allied arts

The Foundation is governed by an independent Board of Directors. The Grand Council, at its meeting in Cincinnati on July 29, 1989, appointed the Foundation's initial directors: John R. Ross, FAIA (Andronicus '49); R. Wayne Burford, AIA (Metagenes '70); and Charles L. Weaver, Jr. (Vitruvius '69). The WGA and the WGE will serve as ex-officio directors. The Board of Directors has met and elected John Ross as President, Wayne Burford as Secretary, and Charlie Weaver as Treasurer. By-laws and a two-year operating budget were also adopted.

The Alpha Rho Chi Foundation is supported through tax-deductible donations and bequests from members of Alpha Rho Chi Fraternity, through gifts and grants from corporations and firms associated with architecture an the built environment, and through grants from philanthropic foundations or other entities which share our goals and objectives.

The board is currently preparing an extensive package of information for presentation to the brotherhood this spring. In the meantime, for information on how the Alpha Rho Chi Foundation can be made a part of your long-term charitable giving program, please contact Wayne Burford at (713) 789-4700 (office) or (713) 666-7377 (home).

Wayne Burford, Metagenes '71, former WGAA

I.M. Pei

was named the first architect winner of the Praemium Imperiale prize sponsored by the Japan Art Society for lifetime achievement in the field of architecture. Mr. Pei recently changed the name of his firm to Pei, Cobb, Freed & Partners.

Elections at the 43rd Convention

At the 43rd National Convention (which will take place on March 2-4, 1990 in Lawrence, KS), two of the Grand Council offices will be up for election.

These offices are:

WGA—Two-year term
WGS—Two-year term

The current WGA and WGS were elected at the 42nd convention but were filling out the last year of the two-year terms left by the previous WGA and WGS.



John R. Ross—
Andronicus '49; and the immediate past WGA; was re-certified for his pilot's license in February 1989.



(continued from Page 1)

and turned them on. The Marina was on fire, the Bay Bridge collapsed, and so on. The overconfident, cool smiles quickly disappeared. Suddenly I remembered my wife...in the Marina.

The drive home was eerie. The only radio station I managed to receive fed me bits and pieces of information. The airport was closed. We had a friend who was to arrive in town that very afternoon. However eerie the drive, I seemed to make it home in good time. The freeways had not been closed yet, since the police had not known about the damaged over and under passes I was traveling on. The City and County were still in shock. Upon arriving in S.F., all traffic lights were out, electric buses were dead in the street, no one moved. I made my way home fearing the worst. I could see and smell smoke, but was unable as yet to see the source. The air didn't move. The temperature remained steady at an unheard-of 80° for October.

What I did see upon pulling onto our corner of the Marina was my wife and most of the neighbors in the street. We were

lucky. Our building was intact, built on the last few blocks of bedrock before hitting the Marina fill. Three blocks away, buildings crumbled. Six blocks away was the fire.

Of the entire catastrophe, you probably know more than I. We lived in the dark for a week while the world watched on TV. No power or media information. The first week was like a scene from Blade Runner. When darkness fell, one felt very small and vulnerable.

What helped us survive was bonding with one another. Our neighbors, the community, we all shared what we had—Candles, food and Stolis! We cared for one another. Without those around us to support us, and vice versa, things could have been much worse.

Life was tough for a few days as sirens wailed through the night. We walked through the rubble and helped the elderly ladies find their homes or just

(continued on Page 5)

Registrations

The Fraternity extends congratulations to the following brothers who have passed their Architectural Registration Exam and have received their licenses:



Kenneth C. Easton—Texas
Fred Marino—Wash., D.C.

BOWL GAMES 1989-90

This year's slate of college football bowl games saw the chapters of Alpha Rho Chi well represented. As in last year's Final Four of the NCAA basketball tournament, when (during the convention banquet) the schools of the founding chapters battled it out with Iktinos emerging victorious with a score of 83-81, this year's bowl games observed several contests with chapters engaging each other. And here are the results:

Holiday Bowl (December 29, 1989 in San Diego)



Penn State (Vitruvius Chapter)
defeated Brigham Young
50-39

Freedom Bowl (December 30, 1989 in Anaheim, CA)



Florida (Apollodorus Chapter)
defeated by Washington
34-7

Copper Bowl (December 31, 1989 in Tucson, AZ)



Arizona (Satyros Chapter)
defeated N.C. State
17-10

Hall of Fame Bowl (January 1, 1990 in Tampa, FL)



Ohio State (Demetrios Chapter)
defeated by Auburn
31-14

Citrus Bowl (January 1, 1990 in Orlando, FL)



Illinois (Anthemios Chapter)
defeated Virginia (Kallikrates Chapter)
31-21



Cotton Bowl (January 1, 1990 in Dallas, TX)



Arkansas (Daphnis Chapter)
defeated by Tennessee
31-27

Rose Bowl (January 1, 1990 in Pasadena, CA)



USC (Andronicus Chapter)
defeated Michigan (Iktinos Chapter)
17-10





(continued from Page 4)

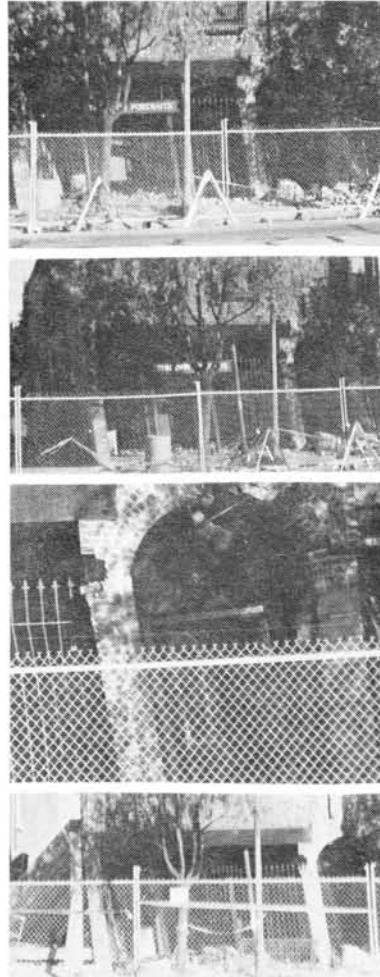
help them through the streets, buckled from cracks and blocked by fire trucks and their hoses. We stood in line for an hour at the one grocery store with a generator operating. Our supply of candles, fortunately laid in during the summer, slowly dwindled as we shared provisions. As each truck, police car, motorcycle brigade and emergency vehicle screamed by our building, we jolted in instant fear, certain the hard shaking was starting again. Aftershocks did number in the tens but blended into traffic noises. Anxiety was high and remained so for a couple of months. It was hard to relax. In

fact, we had lost a lot, mostly our sanity.

Conversely, what was gained was a sense of brotherhood. Once the power returned and telephone service was restored, two of the first calls received were from Brothers. Thank you, Chuck. Thank you, Sue and Ken. Thank you Alpha Rho Chi for caring and for being there. Thank you for brotherhood. It's a good feeling to know, and again to realize, the true meaning of the word. As architects we can all learn from the "Pretty Big One" of October 17, 1989. As brothers, we should never forget our pledge or the true meaning of fraternity.

Duncan Todd, Xenocles '85

Progression of a building as it begins to collapse.



GET 'EM WHILE THEY'RE HOT!

The Fraternity has various and sundry promotional items available at modest prices. *Order yours now.* You'll be helping to support the Fraternity while you display your fraternal spirit. For information call (301) 990-7147. To order, mail the form below with your check or money order to: Philip H. Buckberg, WGAA, Alpha Rho Chi, 9301 Bathgate Ct., Gaithersburg, MD 20829. Make checks payable to *Alpha Rho Chi*. Price includes shipping and handling.



Item	Quantity			Total	Unit Price	Total
	M	L	XL			
75th Anniversary Lapel Pin				—	\$75	\$
75th Anniversary Posters				—	\$4 or 2/\$7	\$
75th Anniversary Champagne Glasses				—	\$6	\$
75th Anniversary Conv. T-Shirts				—	\$8	\$
APX T-Shirts (black on grey)	—	—	—	—	\$9	\$
APX T-Shirts (black on white)	—	—	—	—	\$9	\$
APX Sweatshirts (black on grey)	—	—	—	—	\$13	\$
APX Sweatshirts (black on white)	—	—	—	—	\$13	\$
APX Crest Decals				—	\$.50	\$
APX Crest Embroidered Patches				—	\$5	\$
APX Crest Magnets (full color on wood)				—	\$3	\$
TOTAL						\$



Thomas L. Kerns—
(Demetrios '66) was one of 44 architects named to the College of Fellows in the AIA. The work of his firm, Kern Group Architecture in Washington, D.C., was recognized as "an inspiration to others and has made a significant impact on the public's understanding and appreciation for quality architecture."

MASTER DIRECTORY

Revised December 1989

THE GRAND COUNCIL

Grand Architect Charles L. Nickel, 2101 St. James Ave., Apt. #3, Cincinnati, OH 45206; (513) 751-1133 [Home], (513) 241-3000 [Bus.]
Worthy Grand Associate Architect Philip H. Buckberg, 9301 Bathgate Court, Gaithersburg, MD 20879; (301) 990-7147 [Home], (703) 734-2095 [Bus.]
Worthy Grand Estimator David P. Evers, 2359 Antigua Drive., Apt. 2-C, Columbus, OH 43235; (614) 442-1794 [Home], (614) 424-4921 [Bus.]
Worthy Grand Scribe J. Scott MacKay, 2120 S. Goebbert Rd. #5-202, Arlington Heights, IL 60005; (708) 981-0517 [Home], (708) 272-4310 [Bus.]
Grand Advisor William D. Bradford, 1525 Gregory Avenue, Wilmette, IL 60091; (312) 251-6929 [Home], (708) 644-3464 [Bus.]

NATIONAL APPOINTMENTS

Grand Lecturer Howard B. VanHeuklyn, AIA, 240 North Orange Grove Blvd., Pasadena, CA 91103; (818) 796-7294 [Home], (213) 255-1581 [Bus.]
Grand Clerk Lauren Laskowski, 1108 S. 1st Street, Champaign, IL 61820; (217) 384-9562 [Home]
ARCHI Editor Mary Sudul, 172A Donor Avenue, Elmwood Park, NJ 07407; (201) 797-6096 [Home], (201) 592-2162 [Bus.]
Associate ARCHI Editor Suzanne L. Bainbridge, 40 Metro Vista Drive, Hawthorne, NJ 07506; (201) 427-7081 [Home]
Regional Deputy East Ken Easton, 40 Metro Vista Drive, Hawthorne, NJ 07506; (201) 427-7081 [Home], (212) 867-1777 [Bus.]
Regional Deputy Central/North Marc Cerone, 108 W. Charles, #110, Champaign, IL 61820; (217) 356-0749 [Home]
Regional Deputy Central/South Leslie Zipfel, 1703 W. 24th Street, #7, Lawrence, KS 66046; (913) 842-7772 [Home]
Regional Deputy West Duncan Todd, 1402 Chestnut, #1, San Francisco, CA 94123; (415) 673-6944 [Home]

ALUMNI ASSOCIATIONS AND ORGANIZATIONS

Andronicus James G. Mock, Pres., 824 North Verdugo Rd., Glendale, CA 91205; (818) 240-1321 [Home], (818) 793-9119 [Bus.]
Anthemios Edward T. Egan, Pres., 2300 Bryant Ave. South, #205, Minneapolis, MN 55408; (612) 377-8731 [Home], (612) 635-6665 [Bus.]
Apollodorus O. Frank Frazee, Pres., 2011 SW 9 Terrace, Gainesville, FL 32601; (904) 378-2537 [Home]
Daedalus Alumni Assoc., c/o Daedalus Chapter-Alpha Rho Chi, School of Architecture, Cal Poly State University, San Luis Obispo, CA 93407
Demetrios Jerry Bunge, Pres., 27 Highland Ave., Worthington, OH 43085; (614) 846-5911 [Home], (614) 464-1700 [Bus.]
Heracleides M. Bradley Gaskins, Rep., 3275 S. Riverside Dr., Apt. 254, Tulsa, OK 74105; (918) 749-6578 [Home], (918) 582-8771 [Bus.]
Iktinos Stephen P. Janick, Pres., 723 East Caneel Ct., Tecumseh, MI 49286; (517) 423-8006 [Home], (313) 994-1333 [Bus.]
Metagenes Kim S. Clark, Pres., 2519 10th Street NW, Roanoke, VA 24012; (703) 362-4636 [Home]
Rhoecus Leslie Zipfel, Pres., 1703 W. 24th Street, #7, Lawrence, KS 66046; (913) 842-7772 [Home]
Vitruvius Jeffrey D. Chambers, Pres., 205 N. Broad St., Lititz, PA 17543; (717) 627-2375 [Home]; (717) 291-1044 [Bus.]
Xenocles Ronald L. Grogan, Pres., 7508 Richland Rd., Fort Worth, TX 76118; (817) 589-0846 [Home]

ACTIVE CHAPTERS

Andronicus Chapter Alpha Rho Chi Fraternity, 715 W. 28th St., Los Angeles, CA 90007; (213) 745-8050
Anthemios Chapter Alpha Rho Chi Fraternity, 1108 South First St., Champaign, IL 61820; (217) 384-9562
Apollodorus Chapter Alpha Rho Chi Fraternity, 627 SW 12th St., Gainesville, FL 32601; (904) 371-6992
Daedalus Chapter Alpha Rho Chi Fraternity, c/o School of Architecture, California Polytechnic State Univ., San Luis Obispo, CA 93407; (805) 541-0407
Daphnis Chapter Alpha Rho Chi Fraternity, c/o School of Architecture, University Of Arkansas, 108 Volwalker Hall, Fayetteville, AR 72701; (501) 443-3327
Demetrios Chapter Alpha Rho Chi Fraternity, 214 E. 16th Ave., Columbus, OH 43201; (614) 294-9177
Heracleides Chapter Alpha Rho Chi Fraternity, P.O. Box 812, Norman, OK 73019; (405) 364-2382, (405) 360-2517
Iktinos Chapter Alpha Rho Chi Fraternity, 832 East University, Ann Arbor, MI 48104; (313) 665-0427
Mnesicles Chapter Alpha Rho Chi Fraternity, 605 Ontario Street, SE, Minneapolis, MN 55414; (612) 331-7962
Rhoecus Chapter Alpha Rho Chi Fraternity, 205 Marvin Hall, University Of Kansas, Lawrence, KS 66045; (913) 843-5892
Vitruvius Chapter Alpha Rho Chi Fraternity, c/o Dept. of Arch., Pennsylvania State University, 206 Engineering, Unit C, University Park, PA 16802; (814) 234-6995

COLONIES

Theron Colony Alpha Rho Chi, 622 S. Monroe, Stillwater, OK 74014; (405) 372-9219

ALPHA RHO CHI FRATERNITY

Philip H. Buckberg
9301 Bathgate Ct.
Gaithersburg, MD 20879

Non-Profit Organization U.S. Postage PAID Suburban MD No. 7315
